

Grammanik Bank and MCD
Present Regulations for the Protection
of Spawning Aggregations of Nassau
Grouper and Other Species

Caribbean Fishery Management Council

182nd Regular Meeting

Embassy Suites, Carolina PR

August 15-16 2023



Comprehensive Fishery Management Plan for the St. Thomas/St. John Exclusive Economic Zone (caribbeanfmc.com)

Table 5.10.1. Areas in the St. Thomas/St. John EEZ with seasonal area closures and dates when the area is closed and open for specific fishing activities.

Area	Open	Closed
Grammanik Bank		
No fishing for or possession of any species of fish ² during the closure. The prohibition does not apply to highly migratory species ³ .	May 1 – January 31	February 1 – April 30
Fishing with pots, traps, bottom longlines, gill or trammel nets is prohibited year-round.	Year-round prohibition	
Hind Bank Marine Conservation District	Open	Closed
All fishing is prohibited	Year-round Prohibition	

²Fish means finfish, mollusks, crustaceans, and all other forms of marine animal and plant life other than marine mammals and birds.

³ Highly migratory species means bluefin, bigeye, yellowfin, albacore, and skipjack tunas; swordfish; sharks (listed in Appendix A to part 635 of this title); and white marlin, blue marlin, sailfish, and longbill spearfish.

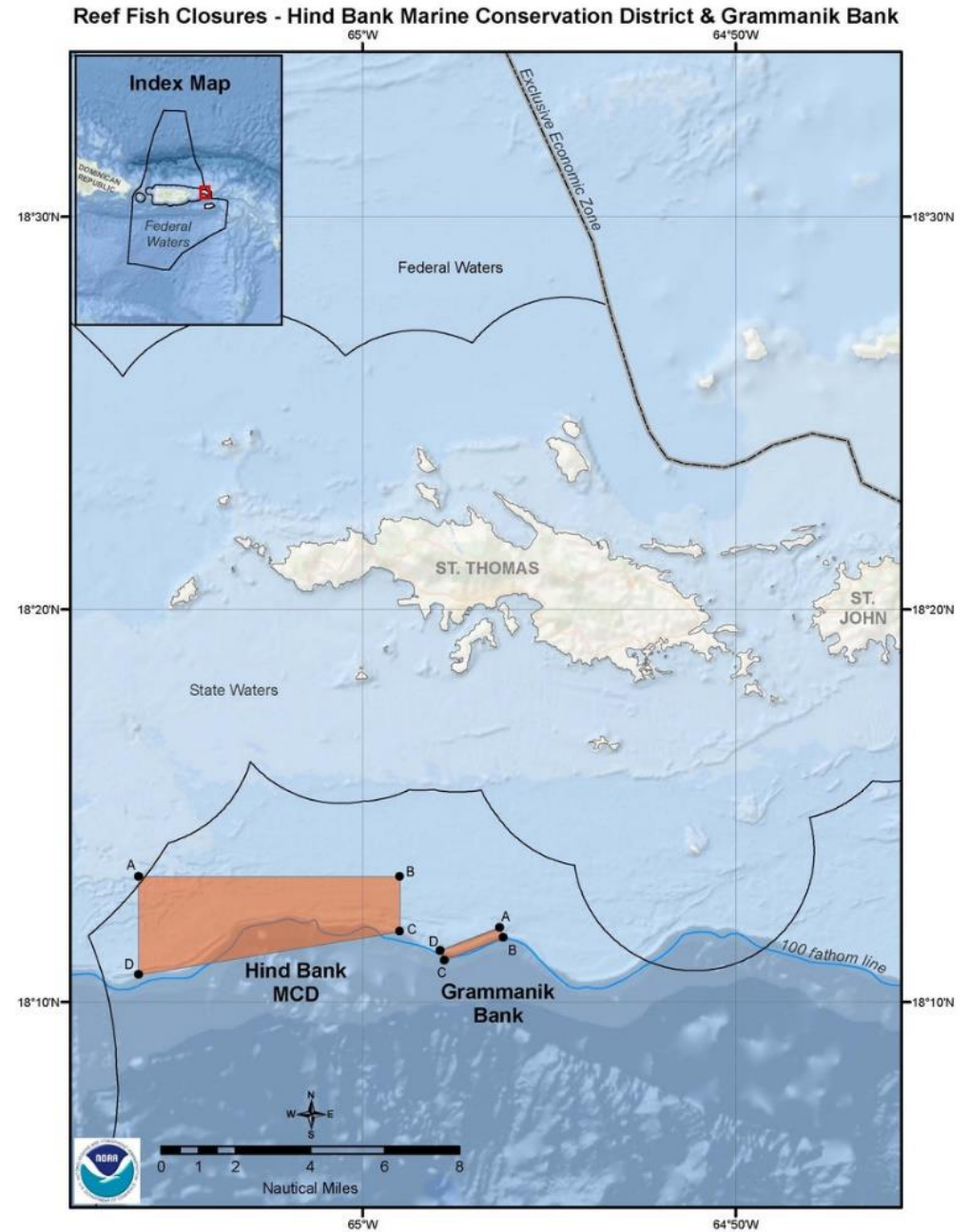
50 CFR 622.514

Summary - comparison

	MCD	GB
Year implemented/regulation	1990 (seasonal)	2005 (seasonal)
	1999 (no-take)	
Area (Km ²)	41	1.5
Months Closed	Jan-Dec	Feb-March-April
Nassau Spawning Months	December-April	
Other species in the areas	Red hind, tiger grouper, yellowfin	Yellowfin, Dog and cubera snappers, Bermuda Chub

2005 Caribbean SFA Amendment:



- Areas of St. Thomas/St. John designated as HAPCs based on the occurrence of confirmed spawning locations:
 - a. Hind Bank Marine Conservation District
 - b. Grammanik Bank.



Ocean Basemap from ArcGIS.com
Sources: Esri, GEBCO, NOAA, National Geographic, DeLorme, HERE, Geonames.org, and other contributors

Size limits and seasonal closure for Nassau grouper in the US Caribbean for both commercial and recreational fishing; includes changes from size limits to no take.

Jurisdiction Area	EEZ	PR	STT/STJ	STX
Year implemented	1985/1990	2004	2006	2006
Size	12" to 24"/NO TAKE	NO TAKE	NO TAKE	NO TAKE
Seasonal Closure	Jan-March/NO TAKE	NO TAKE	NO TAKE	NO TAKE

Legend		FEDERAL AND St. Thomas/St. John TERRITORIAL WATERS Commercial and Recreational Regulations												
GREEN	Fishing allowed													
RED	NO FISHING													
		SEASONAL AREA CLOSURES CALENDAR												
		January	February	March	April	May	June	July	August	September	October	November	December	
Hind Bank MCD	Federal Waters	RED												
Grammanik Bank	Federal Waters	GREEN	RED			GREEN								
No bottom gear		RED												
No take Nassau EEZ/STT/STJ		RED												
Seasons	Red grouper	GREEN												
	Black grouper	GREEN												
	Tiger grouper	GREEN												
	Yellowfin grouper	GREEN												
	Yellowedge grouper	GREEN												
	Nassau Spawning	PINK												PINK

USVI: Harvest and possession prohibited year-round (12 VIRR 9A 316-14e)

Prohibited Take in the EEZ:

Species groups	ACL
Sea cucumbers (all species)	0
Sea urchins (all species)	0
Corals (all species)	0
Grouper 1 (Nassau)	0
Grouper 2 (goliath)	0
Parrotfish 1 (midnight, blue, rainbow)	0
Queen conch	0

Annual Catch Limits in St. Thomas/St. John based on commercial catch

Stock/Stock Complex	Annual Catch Limit (lbs)
Snapper 1 (black, blackfin , silk, vermilion)	20,090
Snapper 2 (queen)	568
Snapper 3 (lane, mutton)	30,784
Snapper 4 (yellowtail)	88,952
Grouper 3 (coney, red hind)	65,030
Grouper 4 (black, red, tiger, yellowfin)	2,254
Grouper 5 (yellowmouth, yellowedge, misty)	390
Parrotfish 2 (queen, princess, redtail , stoplight , redband, striped, redfin)	60,026
Grunts 1 (white , bluestriped)	30,581
Grunts 2 (margate)	2,319
Porgies (jolthead, saucereye , sheepshead, sea bream)	29,039
Jacks (blue runner)	44,665
Surgeonfish (blue tang, ocean surgeonfish, doctorfish)	22,630
Wrasses (hogfish)	2,951
Angelfish (queen, gray , French)	18,297
Triggerfish (queen)	97,670

Other regulations protecting Nassau grouper

EEZ

- Finfish in or from the EEZ must be maintained with head and fins intact (50 CFR 622.10)
- Released immediately with a minimum of harm (50 CFR 622.438)

USVI

- Fish captured or possessed in Territorial waters must be landed with head and fins intact (12 VIRR 316-14)



Recreational Bag Limits (EEZ):

Aggregate bag limit for:	Allowed quantity:
Snapper, grouper, parrotfish, combined	5 fish per person/day, of which no more than 2 may be parrotfish, or if 3 or more persons are aboard, 15 fish total per vessel/day; of which no more than 6 may be parrotfish.
Angelfish, grunts, wrasses, jacks, porgies, triggerfish, surgeonfish, combined	5 fish per person/day, of which no more than 1 may be surgeonfish, or, if 3 or more persons are aboard, 15 fish total per vessel/day, of which no more than 4 may be surgeonfish.

Bag limit for:	Allowed quantity:
Spiny lobster	3 spiny lobsters per person/day, not to exceed 10 spiny lobsters per vessel/day, whichever is less.

Where to Find the FMPs and Regulations:

- [Caribbean Fishery Management Council - Island Based FMPs](https://caribbeanfmc.com/fishery-management/island-based-fmps)
<https://caribbeanfmc.com/fishery-management/island-based-fmps>
- [Sustainable Fisheries in the Caribbean | NOAA Fisheries](https://www.fisheries.noaa.gov/southeast/sustainable-fisheries/sustainable-fisheries-caribbean)
<https://www.fisheries.noaa.gov/southeast/sustainable-fisheries/sustainable-fisheries-caribbean>
- [Commercial Fishing - VI DPNR](https://dprn.vi.gov/fish-and-wildlife/fisher-resources/commercial-fishing/)
<https://dprn.vi.gov/fish-and-wildlife/fisher-resources/commercial-fishing/>



**NOAA
FISHERIES**



What else can be done to protect Nassau groupers?