

Summary of Commercial and Recreational Fishing Regulations for the U.S. Caribbean Exclusive Economic Zone



*For Species Managed by the
Caribbean Fishery Management Council*



National Oceanic and Atmospheric Administration
NOAA Fisheries/Southeast Regional Office
263 13th Avenue South
St. Petersburg, Florida 33701
727-824-5305
727-824-5308 (Fax)
<http://sero.nmfs.noaa.gov>



Caribbean Fishery Management Council
270 Muñoz Rivera Avenue, Suite 401
San Juan, Puerto Rico 00918-1920
(787) 766-5926 (Phone)
(787) 766-6239 (Fax)
<http://www.caribbeanfmc.com>

Photos cover: T. Battista –NCCOS, NOAA, CFMC

Table of Contents

What is the Caribbean Fishery Management Council?	4
Boundaries of the U.S. Caribbean Exclusive Economic Zone	5
Commercial Fishing Regulations.....	6
Seasonal Closures	6
Trip Limit for the Harvest of Queen Conch.....	6
Prohibited Species	7
Size Limits	7
Fish Trap Requirements in the U.S. Caribbean EEZ	8
Spiny Lobster Trap Requirements in the U.S. Caribbean EEZ	9
Recreational Fishing Regulations.....	10
Seasonal Closures	10
Prohibited Species	10
Bag Limits	11
Size Limits	11
General Gear Restrictions.....	12
Aquarium Trade Species.....	12
Measurement Guidelines	13
Species Identification Chart.....	14
Annual Catch Limits	15
Area Closures in the U.S. Caribbean EEZ	17
St. Croix, USVI	17
St. Thomas, USVI.....	18
Puerto Rico.....	19

Commercial Highly Migratory Species (HMS) Regulations	20
Atlantic HMS Commercial Permit Requirements.....	20
HMS Commercial Caribbean Small Boat Permit	22
Recreational HMS Regulations	22
HMS Recreational Permit Requirements	22
Atlantic HMS Recreational Retention and Minimum Size Limits..	23
Prohibited Sharks – Recreational Harvest	24
HMS Recreational Reporting and Tournament Registration Requirements	24
Measurement Guidelines.....	25
Important Phone Numbers	26

What is the Caribbean Fishery Management Council?

The Caribbean Fishery Management Council is one of eight regional fishery management councils, established by the Magnuson-Stevens Fishery Conservation and Management Act. The Caribbean Fishery Management Council is responsible for the conservation and management of U.S. Caribbean fish stocks.

The Council consists of seven voting members:

- Four voting members appointed by the Secretary of Commerce;
- One voting member appointed by each of the Governors of Puerto Rico and the United States Virgin Islands (USVI); and
- The Regional Administrator of NOAA Fisheries Southeast Region.

The Council manages the area from 3 to 200 nautical miles (nm) off the coasts of the USVI (St. Croix, St. Thomas, and St. John), and 9 to 200 nm off the coast of Puerto Rico. The Council develops fishery management plans and recommends regulations to NOAA Fisheries and the Secretary of Commerce for implementation.

This publication was prepared for general informational purposes only and has no legal force or effect. Fishing regulations are subject to change. For additional and updated regulations please visit: http://sero.nmfs.noaa.gov/sustainable_fisheries/policy_branch/index.html

5



6

Snappers		
Common Name	Closed	Open
Silk	October 1 – December 31	January 1 – September 30
Black		
Blackfin		
Vermilion		
Mutton	April 1 – June 30	July 1 – March 31
Lane		
Groupers		
Common Name	Closed	Open
Red Hind*	December 1 – last day of February	March 1 – November 30
Yellowfin	February 1 – April 30	May 1 – January 31
Red		
Tiger		
Black		
Yellowedge		
Queen Conch		
EEZ harvest allowed only east of 64°34' W which includes Lang Bank, St. Croix. Queen conch closure might occur earlier than June 1 if 50,000 lb. territorial/EEZ quota is met.	June 1 – October 31	November 1 – May 31

Commercial trip limit	200 queen conch per vessel/day
-----------------------	--------------------------------

Commercial trip limit	200 queen conch per vessel/day
-----------------------	--------------------------------

Prohibited Species

If these species are caught in the U.S. Caribbean EEZ, they must be returned immediately to the water with minimum harm.

Parrotfish
Midnight, blue, and rainbow parrotfish harvest is prohibited.
Groupers
Nassau and Goliath grouper harvest is prohibited.
Corals
Corals cannot be harvested in the U.S. Caribbean EEZ. Harvest is only allowed through a special permit for scientific and educational purposes.
Queen Conch
Queen conch harvest is prohibited in the U.S. Caribbean EEZ except east of 64° 34' W which includes Lang Bank, St. Croix, USVI.

Size Limits

A fish not in compliance with its required size limit, as specified in this section, in or from the U.S. Caribbean EEZ, may not be possessed, sold, or purchased. A fish not in compliance with its size limit must be released immediately with minimum harm.

Parrotfish
<ul style="list-style-type: none"> 8 inches (in) (20.3 cm) fork length (FL) minimum size for redband parrotfish <u>only applies to St. Croix EEZ.</u> 9 in (22.9 cm) FL minimum size all other parrotfish (princess, queen, striped, redband, stoplight, redfin) <u>only applies to St. Croix EEZ.</u>
Spiny Lobster
<ul style="list-style-type: none"> Minimum size limit of no less than 3.5 in (8.9 cm) carapace length. No harvest of egg bearing females.
Yellowtail Snapper
<ul style="list-style-type: none"> 12 in (30.5 cm) minimum total length.
Queen Conch
<ul style="list-style-type: none"> Queen conch minimum size limit of 9 in (22.9 cm) in length from the tip of the spire to the distal end of the shell, and 3/8 in (9.5 mm) in lip width at its widest point.

Fish Trap Requirements in the U.S. Caribbean EEZ

- Fish traps must display the official number specified for the vessel by Puerto Rico or the USVI so as to be easily identified. Unmarked traps will be considered illegal traps and will be disposed of.
- Fish traps that are tied together in a trap line must have at least one buoy that floats at the surface attached at each end of the trap line. Each buoy must display the official number and color code assigned to the vessel by Puerto Rico or the USVI, whichever is applicable, so as to be easily distinguished, located, and identified.
- Fish traps with hexagonal mesh openings must have a minimum mesh size of 1.5 in (3.8 cm) in the smallest dimension measured between centers of opposite strands.
- A bare-wire fish trap that has other than hexagonal mesh openings or a fish trap of other than bare wire, such as coated wire or plastic, must have a minimum mesh size of 2.0 in (5.1 cm) in the smallest dimension measured between centers of opposite strands.
- A fish trap must have an escape panel located on one side of the trap, excluding the top, bottom, and side containing the trap entrance. The opening covered by the panel must measure not less than 8 by 8 in (20.3 by 20.3 cm). The mesh size of the panel may not be smaller than the mesh size of the trap. The panel must be attached to the trap with untreated jute twine with a diameter not exceeding 1/8 in (3.2 mm). An access door may serve as the panel, provided it is on an appropriate side, it is hinged only at its bottom, its only other fastening is untreated jute twine with a diameter not exceeding 1/8 in (3.2 mm), and such fastening is at the top of the door so that the door will fall open when such twine degrades. Jute twine used to secure a panel may not be wrapped or overlapped.
- A fish trap can only be pulled or tended by the owner unless the owner provides written consent specifying the time period such consent is effective and the trap owner's gear identification number and color code.

Spiny Lobster Trap Requirements in the U.S. Caribbean EEZ

- Spiny lobster traps must display the official number specified for the vessel by Puerto Rico or the USVI so as to be easily identified. Unmarked traps will be considered illegal traps and will be disposed of.
- Spiny lobster traps that are tied together in a trap line must have at least one buoy that floats at the surface attached at each end of the trap line. Each buoy must display the official number and color code assigned to the vessel by Puerto Rico or the USVI, whichever is applicable, so as to be easily distinguished, located, and identified.
- A spiny lobster trap must contain on any vertical side or on the top an escape panel no smaller in diameter than the throat or entrance of the trap. The panel must be made of or attached to the trap by one of the following degradable materials:
 - ◊ Untreated fiber of biological origin with a diameter not exceeding 1/8 in (3.2 mm). This includes, but is not limited to tyre palm, hemp, jute, cotton, wool, or silk.
 - ◊ Ungalvanized or uncoated iron wire with a diameter not exceeding 1/16 in (1.6 mm), that is, 16 gauge wire.
- A spiny lobster trap can only be pulled or tended by the owner unless the owner provides written consent specifying the time period such consent is effective and the trap owner's gear identification number and color code.

Recreational Fishing Regulations

Seasonal Closures

Snappers		
Common Name	Closed	Open
Silk	October 1 – December 31	January 1 – September 30
Black		
Blackfin		
Vermilion		
Mutton	April 1 – June 30	July 1 – March 31
Lane		
Groupers		
Common Name	Closed	Open
Red Hind*	December 1 – last day of February	March 1 – November 30
Yellowfin	February 1 – April 30	May 1 – January 31
Red		
Tiger		
Black		
Yellowedge		

*The red hind grouper seasonal closure applies only to the Red Hind Spawning Aggregation Areas and West of 67°10' W. See pages 17-19 for more information.

Prohibited Species

If these species are caught in the U.S. Caribbean EEZ, they must be returned immediately to the water with minimum harm.

Parrotfish
Midnight, blue, and rainbow parrotfish harvest is prohibited.
Groupers
Nassau and Goliath grouper harvest is prohibited.
Corals
Corals cannot be harvested in the U.S. Caribbean EEZ except through a special permit for scientific and educational purposes.
Queen Conch
Queen conch harvest is prohibited in the U.S. Caribbean EEZ except east of 64°34' W which includes Lang Bank, St. Croix, USVI.

Bag Limits

Species taken under the recreational bag limit are not to be sold.

Aggregate bag limit for:	Allowed quantity:
snapper, grouper, and parrotfish	5 fish per person/day or, if 3 or more persons are on board, 15 fish per vessel/day; but not to exceed: 2 parrotfish per person/day or 6 parrotfish per vessel/day.
angelfish, boxfish, goatfish, grunts, wrasses, jacks, scups and porgies, squirrelfish, tilefish, surgeonfish, triggerfish and filefish.	5 fish per person/day or, if 3 or more persons are on board, 15 fish per vessel/day, but not to exceed: 1 surgeonfish per person/day or 4 surgeonfish per vessel/day.
spiny lobster	3 spiny lobster per person/day, no more than 10 spiny lobster per vessel/day.
queen conch – harvest of queen conch is only allowed east of 64°34' W which includes Lang Bank, St. Croix, USVI. Harvest in the rest of the EEZ is prohibited.	3 queen conch per person/day, or if more than 4 persons aboard vessel, 12 queen conch per vessel/day.

Size Limits

A fish not in compliance with its required size limit, as specified in this section, in or from the U.S. Caribbean EEZ, must be released immediately with minimum harm.

Parrotfish
<ul style="list-style-type: none"> 8 in (20.3 cm) FL minimum size for redband parrotfish <u>only applies to St. Croix EEZ.</u> 9 in (22.9 cm) FL minimum size all other parrotfish (princess, queen, striped, redband, stoplight, redfin) <u>only applies to St. Croix EEZ.</u>
Spiny Lobster
<ul style="list-style-type: none"> Minimum size limit of no less than 3.5 in (8.9 cm) carapace length. No harvest of egg bearing females.
Yellowtail Snapper
<ul style="list-style-type: none"> 12 in (30.5 cm) minimum total length.
Queen Conch
<ul style="list-style-type: none"> Queen conch minimum size limit of 9 in (22.9 cm) in length from the tip of the spire to the distal end of the shell, and 3/8 in (9.5 mm) in lip width at its widest point.

General Gear Restrictions

Applies to both the commercial and recreational sectors.

General Gear and Method Restrictions Applicable to All Fisheries:	
Reef Fish Fishery Spiny Lobster Fishery Coral Reef Resources Fishery Queen Conch Fishery	No use of explosives.
	No chemical or plant-derived toxins can be used in a coral area.
Gear and Method Restrictions Applicable to Specific Fisheries:	
Reef Fish, including aquarium trade species	No use of poisons, drugs, or other chemicals.
	No use of powerheads.
	No use of gillnets and trammel nets.
	Dip nets and slurp guns allowed for aquarium species.
Coral Reef Resources	Fish must be landed with head and fins intact.*
	No chemical or plant-derived toxins can be used in a coral area.
Spiny Lobster	No use of power-assisted tools
	No use of spears, hooks, or similar devices.
	No use of gillnets and trammel nets.
Queen Conch	Lobster must be landed with head and carapace intact.
	No harvest by diving while using a continued air supply from surface.
	Queen conch must be landed with meat and shell intact.
* Certain exceptions to this rule apply. See 50 CFR 622.10	

Aquarium Trade Species

Please review the Fisheries of the Caribbean, Gulf of Mexico, and South Atlantic, 50 CFR part 622 regulations for a list of allowed aquarium trade species harvest. This list can be found in Tables 1 and 2 of Appendix A to Part 622 — for Caribbean Coral Reef Resources and — Caribbean Reef Fish. A live red hind or mutton snapper cannot be sold or purchased and used in the marine aquarium trade.

Measurement Guidelines

Total Length – straight line distance from the tip of the snout to the tip of the tail (caudal fin), excluding any caudal filament, while the fish is lying on its side. The mouth of the fish may be closed and/or the tail may be squeezed together to give the greatest overall measurement.



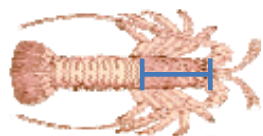
Total Length (TL)

Fork Length – straight-line distance from the tip of the head (snout) to the rear center edge of the tail (caudal fin).



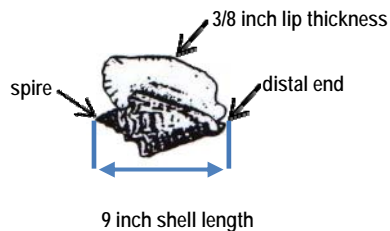
Fork Length (FL)

Carapace Length – measurement of the carapace (head and body) of a spiny lobster from the anteriormost edge (front) of the groove between the horns directly above the eyes, along the middorsal line (middle of the back), to the rear edge of the top part of the carapace, excluding any translucent membrane.



Carapace Length (CL)

Queen Conch – minimum size limit of 9 inch (22.9 cm) in length from the tip of the spire to the distal end of the shell, and 3/8 inch (9.5 mm) in lip width at its widest point. The queen conch must be landed with meat and shell intact.



Species Identification Chart



Red Grouper



Black Grouper



Tiger Grouper



Yellowfin Grouper



Yellowedge Grouper



Red Hind Grouper



Goliath Grouper



Nassau Grouper



Rainbow Parrotfish



Blue Parrotfish



Midnight Parrotfish



Mutton Snapper



Lane Snapper



Black Snapper



Blackfin Snapper



Vermilion Snapper



Silk Snapper



Yellowtail Snapper



Spiny Lobster



Queen Conch



Corals

Annual Catch Limits

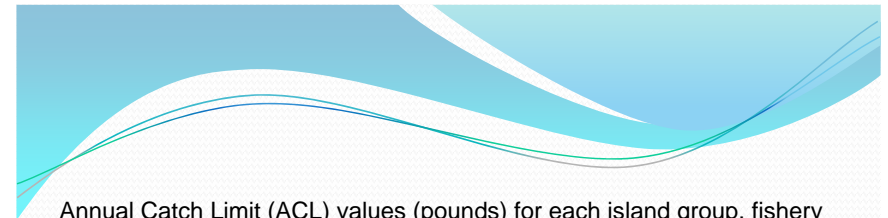
An annual catch limit is the total amount of a species or species group that can be taken by fishers per calendar year. Annual catch limits can be measured in pounds or numbers of individuals. An annual catch limit can apply to a single species (for example queen conch) or a group of species (for example, Snapper Unit 2 that includes queen and cardinal snappers).

Accountability Measures

- Accountability measures are management controls to prevent annual catch limits from being exceeded, and to correct overages if they occur.
- Accountability measures are triggered if landings exceed the annual catch limits.
- Throughout U.S. Caribbean EEZ waters, the accountability measures consist of reducing the length of the fishing season for that species group the year following the annual catch limit overage by the amount needed to prevent such an overage from occurring again.

Why do we need Annual Catch Limits and Accountability Measures?

- The Magnuson-Stevens Fishery Conservation and Management Act requires fishery managers to establish annual catch limits and accountability measures for all Council-managed species to:
 - End and prevent overfishing (i.e., rate of fish removal too high).
 - Maximize long-term, sustainable harvest and the health of the habitats upon which fishery resources depend.



Annual Catch Limit (ACL) values (pounds) for each island group, fishery management unit, and sector (commercial and recreational). For the Puerto Rico recreational sector, numbers of individuals are in parentheses.

	Puerto Rico		St. Croix	St. Thomas/ St. John
	Commercial Sector	Recreational Sector		
Fishery Management Unit	ACL	ACL	ACL	ACL
Queen Conch	0	0	50,000	0
Parrotfish	52,737	15,263 (9,118)	240,000	42,500
Snapper Unit 1	284,685	95,526 (83,197)	N/A	N/A
Snapper Unit 2	145,916	34,810 (7,862)		
Snapper Unit 3	345,775	83,158 (78,024)		
Snapper Unit 4	373,295	28,509 (27,866)		
Snapper Total	1,149,671	242,004 (196,949)	102,946	133,775
Grouper	177,513	77,213 (93,580)	30,435	51,849
Angelfish	8,984	4,492 (1,667)	305	7,897
Boxfish	86,115	4,616 (2,810)	8,433	27,880
Goatfishes	17,565	362 (814)	3,766	320
Grunts	182,396	5,028 (11,531)	36,881	37,617
Wrasses	54,147	5,050 (4,613)	7	585
Jacks	86,059	51,001 (37,945)	15,489	52,907
Scups & Porgies	24,739	2,577 (3,079)	4,638	21,819
Squirrelfish	16,663	3,891 (8,510)	121	4,241
Surgeonfish	7,179	3,590 (5,365)	33,603	29,249
Triggerfish & Filefish	58,475	21,929 (11,620)	24,980	74,447
Spiny Lobster	327,920	N/A	107,307	104,199
U.S. Caribbean EEZ ACL				
Tilefish	14,642			
Aquarium Trade	8,155			

Snapper Unit 1 includes silk, black, blackfin, vermilion, and wenchman.

Snapper Unit 2 includes queen and cardinal.

Snapper Unit 3 includes gray, lane, mutton, dog, schoolmaster, and mahogany.

Snapper Unit 4 includes yellowtail.

Area Closures in the U.S. Caribbean EEZ

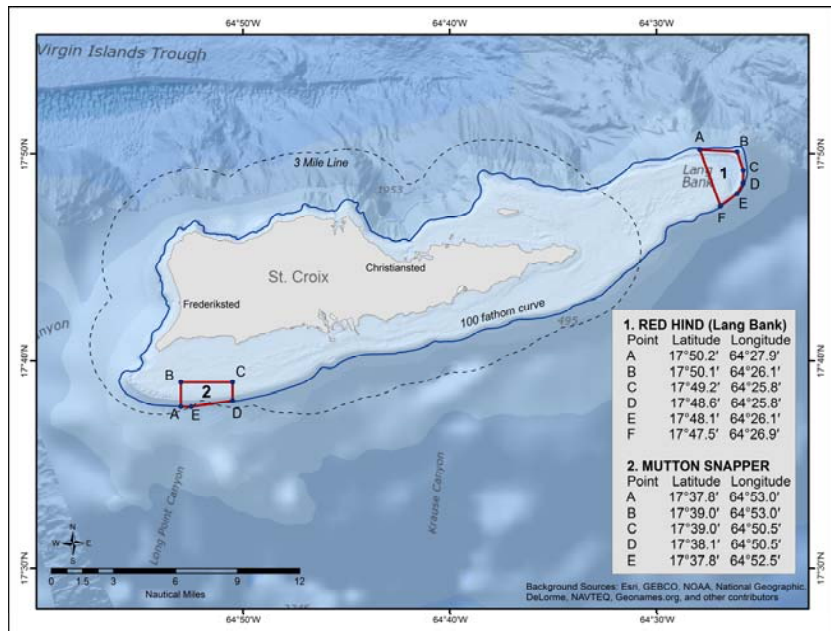
St. Croix, USVI

1. Red Hind Spawning Aggregation Area (Lang Bank):

- Closed annually from December 1 through the last day of February to all fishing activities.
- The use of pots, traps, bottom longlines, gill or trammel nets is prohibited year-round.

2. Mutton Snapper Spawning Aggregation Area:

- Closed annually from March 1 through June 30 to all fishing activities.
- The use of pots, traps, bottom longlines, gill or trammel nets is prohibited year-round.



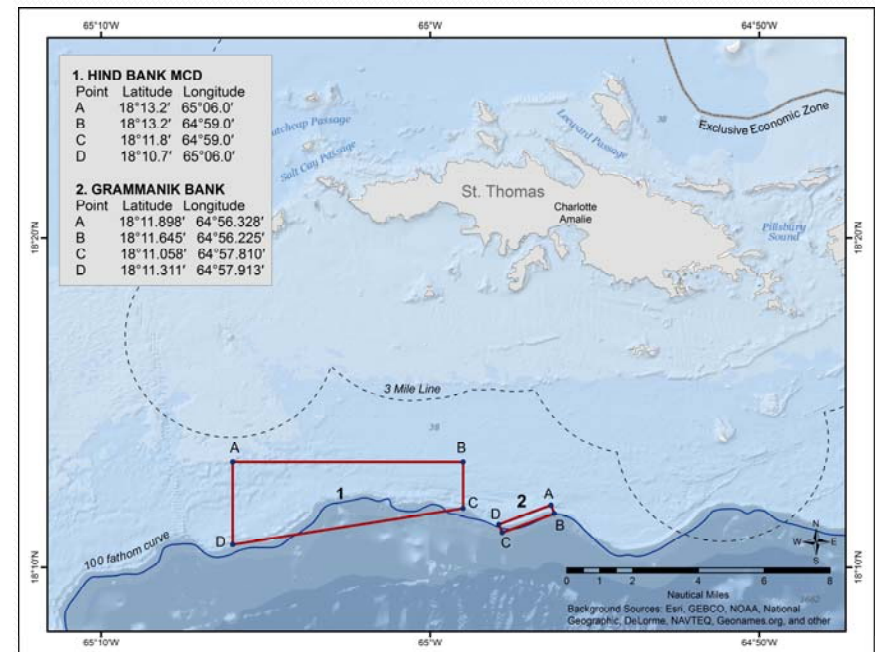
St. Thomas, USVI

1. Hind Bank Marine Conservation District:

- Year-round closure to all fishing activities.
- Anchoring is prohibited year-round.

2. Grammanik Bank:

- Closed annually from February 1 through April 30 to all fishing activities.
- The harvest of HMS species is allowed.
- The use of pots, traps, bottom longlines, gill or trammel nets is prohibited year-round.



Puerto Rico

1. Bajo de Sico:

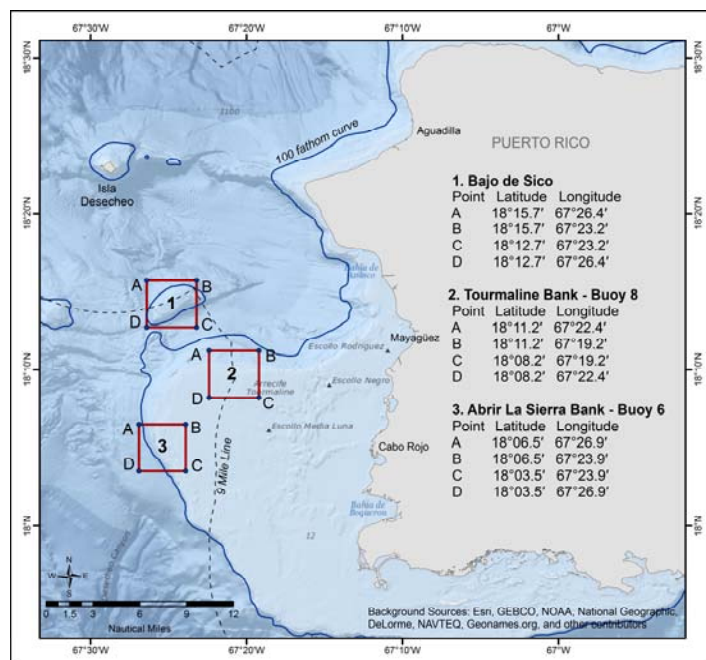
- Closed annually from October 1 through March 31 to fishing for Council-managed Caribbean reef fish species.
- The harvest of HMS species is allowed.
- The use of pots, traps, bottom longlines, gill or trammel nets is prohibited year round.
- Anchoring is prohibited year-round.

2. Tourmaline Bank:

- Closed annually from December 1 through the last day of February to all fishing, including HMS species.
- The use of pots, traps, bottom longlines, gill or trammel nets is prohibited year-round.

3. Abrir la Sierra Bank:

- Closed annually from December 1 through the last day of February to all fishing, including HMS species.
- The use of pots, traps, bottom longlines, gill or trammel nets is prohibited year-round.



Commercial Highly Migratory Species (HMS) Regulations

Federal regulations at 50 CFR 635 govern fisheries for Atlantic HMS including tunas, swordfish, billfishes, and sharks. A brief summary of Atlantic HMS commercial permits is provided below. For more information about Atlantic HMS fisheries regulations, please go to <http://www.nmfs.noaa.gov/sfa/hms/> or call 301-427-8503.

Atlantic HMS Commercial Permit Requirements

Commercial Caribbean Small Boat permit	Effective only in the U.S. Caribbean, this is an open access permit that allows fishing for and sale of bigeye, albacore, yellowfin and skipjack tunas, and swordfish. Shark retention under the permit is not currently allowed. The permit authorizes the use of specific gears and is restricted to vessels less than or equal to 45 feet in overall length. This permit may not be held in combination with any other Atlantic tuna, swordfish, or other HMS vessel permits. HMS landings must be reported through existing territorial government programs. Specific retention limits, minimum size limits, and authorized gears apply (see the following table). For more information, go to http://www.nmfs.noaa.gov/sfa/hms/ or call 727-824-5399. To apply for this permit, go to http://sero.nmfs.noaa.gov/operations_management_information_services/constituency_services_branch/permits/permit_apps/index.html or call 877-376-4877.
Commercial tuna categories: General, Longline, Purse seine, Harpoon, Charter/headboat	Unless a vessel has a Commercial Caribbean Small Boat Permit described above, vessels must have a commercial tuna permit in one of the categories listed to the left to sell Atlantic bluefin tuna, albacore, Atlantic bonito, bigeye tuna, skipjack tuna, or yellowfin tuna. Separate Atlantic bluefin quota and gear restrictions apply to each category. For more information contact the Atlantic tunas information line (888-872-8862) or visit https://hmspermits.noaa.gov . For an Atlantic Tunas Longline permit, go to http://sero.nmfs.noaa.gov/operations_management_information_services/constituency_services_branch/permits/permit_apps/index.html or call 877-376-4877.

Atlantic HMS Commercial Permit Requirements (continued)

Swordfish vessel permit	Unless a vessel has a Commercial Caribbean Small Boat Permit described above, vessels must have a directed or incidental limited access permit or a Swordfish General Commercial Permit for commercial harvest and sale of swordfish. For more information about swordfish limited access permits, please go to http://sero.nmfs.noaa.gov/operations_management_information_services/constituency_services_branch/permits/permit_apps/index.html or call 877-376-4877. For more information about the Swordfish General Commercial Permit, visit https://hmspermits.noaa.gov .
Shark vessel permit	Unless a vessel has a Commercial Caribbean Small Boat Permit described above, vessels must have a directed or incidental limited access permit for harvest and sale of sharks. For more information about shark limited access permits, please go to http://sero.nmfs.noaa.gov/operations_management_information_services/constituency_services_branch/permits/permit_apps/index.html or call 877-376-4877.
Tuna, swordfish, or shark dealer permits	Unless a vessel has a Commercial Caribbean Small Boat Permit described above, vessels must sell fish to a permitted dealer. A dealer permit is required for a dealer to receive tunas, swordfish, or sharks harvested from the U.S. Caribbean. For more information about swordfish and shark dealer permits, please go to http://sero.nmfs.noaa.gov/operations_management_information_services/constituency_services_branch/permits/permit_apps/index.html or call 877-376-4877. For more information about tuna dealer permits, go to http://www.nero.noaa.gov/aps/permits/programs/dealer.html or call (978) 281-9370 ext. 6442.

HMS Commercial Caribbean Small Boat Permit Retention and minimum size limits and authorized gears (information in this table only applies to this permit):

Species	Bag Limit per vessel per trip	Minimum Size	Authorized Gear with this permit
Bigeye, albacore, yellowfin, and skipjack tunas	10 (total for all species)	Bigeye and yellowfin tunas: 27 in (69 cm) curved fork length; Albacore and Skipjack tuna: no minimum size	Rod and reel, handline, harpoon, bandit gear, green-stick gear, and buoy gear (yo-yo gear)
Swordfish	2	47 in lower jaw fork length (if head naturally attached) 25 in cleithrum to caudal keel (if any portion of head removed)	Rod and reel, handline, harpoon, bandit gear, and buoy gear (yo-yo gear)
Sharks	No retention	Not applicable	Rod and reel, handline, and bandit gear

Recreational HMS Regulations

Federal regulations at 50 CFR 635 govern fisheries for Atlantic HMS including tunas, swordfishes, billfishes, and sharks. A brief summary of Atlantic HMS recreational permits and regulations is provided below. For more information about Atlantic HMS fisheries regulations, please go to <http://www.nmfs.noaa.gov/sfa/hms/> or call 301-427-8503.

HMS Recreational Permit Requirements

HMS Angling permit	Required to fish for, retain, or possess any HMS. Sale of HMS is not permitted under this permit. Permits may be obtained by visiting hmspermits.noaa.gov or calling 888-872-8862.
HMS Charter/Headboat permit	Required on a for-hire trip to fish for, retain, or possess any HMS. Regulations may vary depending on whether the vessel is a charter or headboat. For more information or to obtain a permit, visit hmspermits.noaa.gov or call 888-872-8862.
Atlantic Tunas General permit or Swordfish General Commercial permit	Primarily these are commercial fishing permits; however, when fishing in a registered HMS tournament, a vessel with either of these permits may fish under recreational retention and size limits. For more information or to obtain a permit, visit hmspermits.noaa.gov or call 888-872-8862.

Atlantic HMS Recreational Retention and Minimum Size Limits

Species	Minimum Size Limit	Season	Daily Bag Limit
Tuna			
Bluefin	27" curved fork length	Year-round (or until quota is met)	Bag limits are subject to sub-quotas by size and permit categories, change seasonally, and are reduced to zero when sub-quotas are filled
Bigeye	27" curved fork length	Year-round	none
Yellowfin	27" curved fork length	Year-round	3 per person
Albacore	none	Year-round	none
Skipjack	none	Year-round	none
Blackfin	none	Year-round	none
Billfish			
Blue marlin	99" lower jaw fork length	Year-round	none
White Marlin	66" lower jaw fork length	Year-round	none
Sailfish	63" lower jaw fork length	Year-round	none
Longbill spearfish	Harvest prohibited		
Swordfish	Whole fish: 47" lower jaw fork length, or 25" cleithrum to caudal keel		1 per person (maximum 4 per vessel for Angling boats; 6 per vessel for Charter boats; 15 per vessel for Headboats)
Sharks			
Smoothhound and spiny dogfish	None	None	None
Atlantic sharpnose shark	None	Year-round	1 per person
Bonnethead	None	Year-round	1 per person
Hammerheads (great, scalloped*, and smooth)	78" fork length	Year-round	1 per vessel (hammerhead OR other shark)
Other Sharks – except for the shark species prohibited for harvest.	54" fork length	Year-round	

As of this printing, scalloped hammerhead sharks are proposed to be listed as threatened under the Endangered Species Act. If this occurs, additional regulations, including prohibition of retention, may apply. For more information, go to <http://www.nmfs.noaa.gov/sfa/hms/>

Prohibited Sharks – Recreational Harvest

Atlantic angel, bigeye thresher, bigeye sand tiger, bigeye sixgill, Caribbean reef, Caribbean sharpnose, basking; bignose, dusky, sand tiger, Galapagos, longfin mako, narrowtooth, night, white, sevengill, silky, sixgill, smalltail, whale, sandbar.

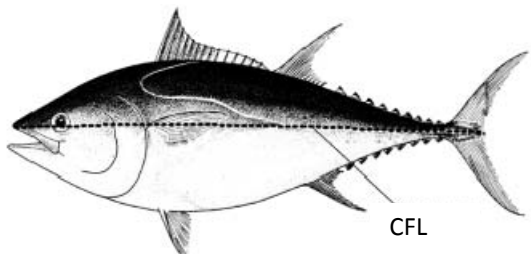
HMS Recreational Reporting and Tournament Registration Requirements

All recreational landings of swordfish, billfish, and Atlantic bluefin tuna must be reported within 24 hours at hmspermits.noaa.gov or by phone at 888-872-8862 (bluefin tuna) or 800-894-5528 (swordfish and billfish). For updates on tuna quota monitoring and tuna retention limit adjustments, anglers may call the Atlantic Tunas Information Line at 888-872-8862 or visit hmspermits.noaa.gov. For further information on tunas, contact the HMS Management Division located in Gloucester, MA at 978-281-9260.

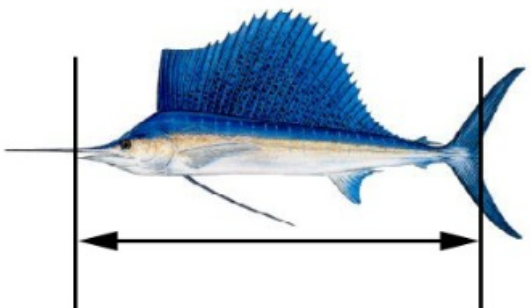
HMS tournament registration – Required for any fishing competition that awards points or prizes for the catch and release or landing of HMS. Tournament directors or operators must register with NOAA Fisheries at least four weeks in advance of the scheduled tournament. If selected, tournament operators must send a summary of tournament catch to NOAA Fisheries within 7 days after the tournament has ended. Applications for permits other than HMS permits may be obtained from NOAA Fisheries, Southeast Regional Office, 263 13th Avenue S., St. Petersburg, FL 33701 (telephone 877-376-4877). HMS permits can be purchased online at hmspermits.noaa.gov or by calling 888-872-8862. HMS tournament registration forms and instructions are available online at www.nmfs.noaa.gov/sfa/hms/Tournaments or by calling 727-824-5399.

Measurement Guidelines

Curved Fork Length (CFL) – line tracing the contour of the body from the tip of the upper jaw to the fork of the tail.



Lower Jaw Fork Length (LJFL) – Straight line measurement from the tip of the lower jaw to the fork of the tail. This measurement is used if the head is naturally attached.



Cleithrum to Caudal Keel (CK) – Curved length measurement from cleithrum to caudal keel. This measurement is used if the head is removed prior to the time of landing.



Important Phone Numbers

- **NOAA Fisheries:**

- ◇ Southeast Regional Office, St. Petersburg, FL: 727-824-5301
- ◇ Southeast Regional Office Sustainable Fisheries Division: 727-824-5305
- ◇ Southeast Regional Office Permits and Regulations Branch: 877-376-4877
- ◇ Southeast Region Office of Law Enforcement: 727-824-5344
- ◇ Office of Law Enforcement national violations tip line: 800-853-1964
- ◇ Highly Migratory Species Management Division: 301-427-8503
- ◇ 24-hour tuna information line: 888-872-8862 (also for tuna permit applications)
- ◇ Swordfish/billfish recreational reporting: 800-894-5528

- **Caribbean Fishery Management Council:** 787-766-5926 or 787-766-5927

- **U.S. Coast Guard, Sector San Juan, PR:** 787-289-2041

- **Puerto Rico Department of Natural and Environmental Resources:** 787-999-2200

- **USVI Department of Planning and Natural Resources:** 340-773-1082

- **Division of Fish and Wildlife Bureau of Fisheries, USVI**

- ◇ St. Thomas Office: 340-775-6762
- ◇ St. Croix Office: 340-773-1082 or 340-772-1955

NOTE: The Official Electronic Code of Federal Regulations for 50 CFR 622— for Fisheries of the Caribbean, Gulf of Mexico, and South Atlantic is available online. Please visit http://sero.nmfs.noaa.gov/sustainable_fisheries/policy_branch/index.html.



Photo: T. Battista/NCCOS and UNCW